



FULL-SERVICE STORE DECOR



• DESIGN • PRINT • FABRICATE • INSTALL



MIX OR MATCH
ANY **5** ITEMS
\$19.99
BIGGER PACKS
BETTER VALUE
Everyday

We are a full service design & print company!

Whatever your vision is, ***We Can DoDat!***



GROCERY RELATED SERVICES:

- Brand development and refreshes
- Storewide graphic standards and unique store style guides
- Aisle markers and overhead signs
- Flat printed wall signage
- Dimensional letters and logos
- Hanging and blade signs
- Vinyl wall, window, and floor graphics
- Cooler, freezer, and case wraps
- Check stand signage and impulse displays
- Endcap signage and gondola toppers
- Maxmetal / aluminum composite panels
- Acrylic, PVC, foam, and HDU signage
- Cut-out letters, numbers, and custom shapes
- Backlit and illuminated signage
- Menu boards
- Posters, banners, and large-format prints
- Temporary promotional signage
- Seasonal décor and event graphics
- Wall murals and lifestyle graphics
- Customer designed and printed employee name badges
- Design and creation of grocery inserts or in-store flyers

If you don't see what you're needing, then ask us about it.



Since 2006, we've been a premier design, marketing, and print company located in Hendersonville, TN. We're passionate about helping stores grow by delivering creative solutions and high-impact printing that truly connects with customers. From initial concept and design to production and professional installation, no project is too big or too small for our team. What we love most is showing our clients that not only can we "DoDat," but we can do it cost-effectively — helping them achieve more than they ever thought possible.

Craig Sinnard
DoDat Owner/Marketing Strategist

615-537-1288 | dodatcreative.com

Email us at orders@dodatcreative.com for more information or to set up an in-person meeting.

Brooks Grocery

CHAPEL HILL, TN

Brooks Davis, Owner



Chapel Hill used the overhead wall space to showcase their logo and welcome customers in.



Warm, welcoming colors were thoughtfully selected to create an inviting and comfortable atmosphere, enhancing the overall shopping experience.



615-537-1288 | dodatcreative.com

Email us at orders@dodatcreative.com for more information or to set up an in-person meeting.



Little Giant already had a yellow and green color palette in place, which we leveraged to create cohesive signage throughout the store. The endcaps were equipped with three-sided signs to showcase featured items, while preprinted marketing banners and price inserts slide easily into the installed channels, allowing staff to quickly update pricing and promotions.



Little Giant Farmer's Market

NEWNAN, GA



Outdoor signs were designed using Maxmetal, providing long-lasting durability while maintaining a clean and professional appearance.



For Contrast, we implemented a distinct color system to brand each department, creating clear visual separation and a more organized layout. Little Giant supports this strategy with cost-effective weekly printed signage that highlights sale items. Each sign is displayed in durable Maxmetal stands, ensuring long-lasting performance and maximum visibility throughout the store.





615-537-1288 | dodatcreative.com

Email us at orders@dodatcreative.com for more information or to set up an in-person meeting.



Bruce's Foodland

FORT PAYNE, AL

Eric Bruce, Owner



Bruce's extended the same theme and color palette into another Foodland location, ensuring a consistent and recognizable brand experience across its stores.

Bruce's Foodland

SECTION, AL

Eric Bruce, Owner



Bruce's incorporated a mix of wall colors and printed faux brick accents, complemented by bold, dimensional hanging letters, to clearly define each department and give every space a distinct, memorable identity.



The entry area was adorned with faux-printed brick and stone panels, featuring a large drink mural seamlessly printed onto the brick background. This design creates a warm, inviting atmosphere, welcoming customers as they enter and exit the store.





615-537-1288 | dodatcreative.com

Email us at orders@dodatcreative.com for more information or to set up an in-person meeting.

OUR QUICK & EASY PROCESS



Request a Store Walk-Through

- Email your request to orders@dodatcreative.com to begin your new décor package.



In-Store Visit & Consultation

A DoDat Creative representative will:

- Visit your store and complete a walk-through
- Measure all relevant areas
- Discuss your vision and goals
- Take photos for mockup development



Mockup & Quote Approval

- You will receive a detailed visual mockup (what you see is what you get).
- A project quote will be provided for approval.
- A 50% deposit is required to begin production.



Creative Development

- You'll be assigned a dedicated creative artist.
- The artist will work directly with you.
- Proofs will be created and revised to your satisfaction.



Manufacturing & Delivery

- Once approved, your décor package will be manufactured in-house.
- Products will be delivered to your store.



Installation

- Professional installers will complete the setup.
- Installation follows the approved mockup and your schedule.



Final Payment & Warranty

- Final payment is due upon full project approval.
- Includes a 3-year warranty covering manufacturing and installation.



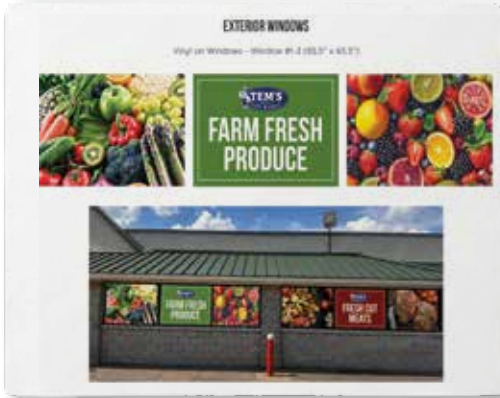
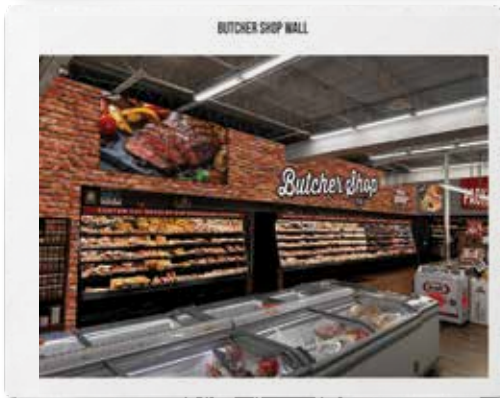
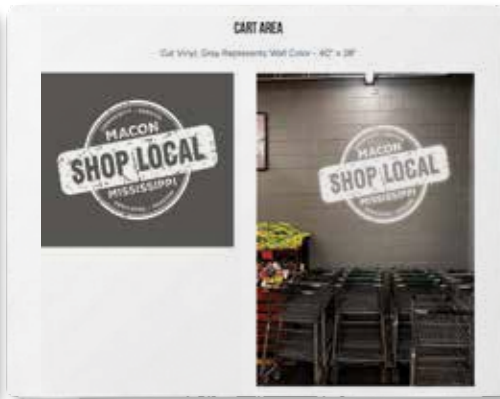
Highlighting the cohesive color palette and custom printed textures designed to define the store's new visual identity.



Tem's requested that we design a new logo for their store. Here are logo concepts we presented for their consideration.

What to expect in your Digital Mock-Up Presentation

This is a portion of the official digital mock-up presentation we prepared and presented to Tem's Food Market in Macon, MS to illustrate what the finished décor would look like once installed as part of their complete store rebranding project.



On the next page, you'll see the completed project fully installed.



615-537-1288 | dodatcreative.com

Email us at orders@dodatcreative.com for more information or to set up an in-person meeting.



The updated logo was seamlessly integrated into the signage — from the welcoming entrance to the checkout — along with clearly marked aisles so customers can effortlessly find everything on their shopping list.



We printed and installed the newly designed outdoor signage using Maxmetal, ensuring long-term durability and a high-quality, lasting appearance.

Tem's Food Market

MACON, MS



The artwork was offset from the wall to create a striking three-dimensional effect, while bold colors, stylized graphics, and vibrant photography establish a distinct identity for each department.



Integrated throughout the store's signage display to the farewell message at aisle signage that helps customers with their shopping list.





615-537-1288 | dodatcreative.com

Email us at orders@dodatcreative.com for more information or to set up an in-person meeting.



Foodland's signature red was featured throughout the store, complemented by vibrant, professional imagery at the entrance, and carried through to the exit area and glass door signage for a cohesive and visually engaging experience.

Compton's Foodland NASHVILLE, TN

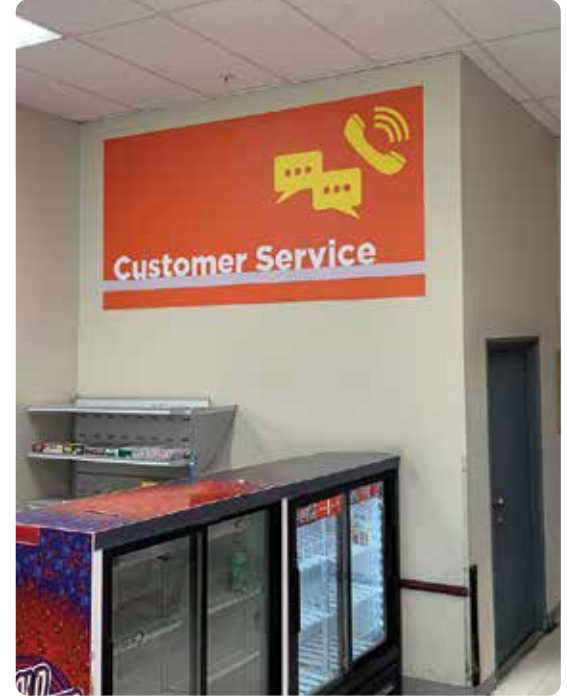


New entry signage showcases fresh produce, creating a warm and inviting first impression for customers as they enter the store.



Foodland

MADISON, TN



This store retained its signature red in the meat and bakery sections, while using bold colors and vibrant photography on the 4-by-8-foot signage to highlight and differentiate each department.





615-537-1288 | dodatcreative.com

Email us at orders@dodatcreative.com for more information or to set up an in-person meeting.

The customer needed a creative solution to cover windows obstructed by shelving. We designed, printed, and installed stylish custom window clings that complement the store's interior décor, transforming the exterior into a polished, cohesive, and visually appealing storefront.



Piggly Wiggly

TUSKEGEE, AL



Four 4-by-8-foot panels were thoughtfully designed and assembled into one cohesive display, then suspended from the ceiling to draw attention to and highlight the customer service area.



The dimensional Piggly Wiggly logo, printed on thick material and styled to mimic wooden letters, brings a warm, down-home feel that complements the store's overall design.



615-537-1288 | dodatcreative.com

Email us at orders@dodatcreative.com for more information or to set up an in-person meeting.



Bring your store's personality to life with playful, eye-catching custom-designed cutouts that captivate attention and create a memorable shopping experience.



Paddy O' Furniture NASHVILLE, TN



From small startups to large enterprises, we create and print stunning photography in any size and design professional signage that effectively showcases each business's products.



Brooks Grocery

IUKA, MS

Brooks Davis, Owner



Each letter was individually framed in wood and assembled into a single piece prior to installation, ensuring a polished and seamless final presentation.



Iuka proudly celebrates its community heritage by incorporating historic local photographs throughout the walls and doors, creating a space that honors its rich past while engaging visitors.





615-537-1288 | dodatcreative.com

Email us at orders@dodatcreative.com for more information or to set up an in-person meeting.



Big Star combined bold, vibrant colors with classic faux brick wall graphics to create an inviting and enjoyable shopping environment.



Big ★ Star

RED BAY, AL

Hal Keaton, Owner



Big Star extended the same thoughtfully crafted design elements into its second location, creating a cohesive and recognizable brand experience across both stores.

Big Star

RUSSELLVILLE, AL



Multiple signs welcome customers, directing them to a free cup of coffee, signature products, local produce, and a glimpse of its history.



Products, Materials & Expertise



Aisle Markers

Clear, legible, and visually consistent, guiding customers effortlessly through the store.



Flat Surface Printing

High-impact visuals for branding, departments, and promotional areas of your store.



Check Stand Signs

Capture the point of sale, promoting impulse buys and key messaging effectively.



Dimensional Wall Signage

Adds depth, enhances visibility, and delivers a premium look from every angle in the store.



Vinyl Wrap/Cling

Ideal for walls, columns, coolers, and fixtures, offering versatile, eye-catching graphics.



Maxmetal/Aluminum

Lightweight, durable, and ideal for long-lasting retail graphics. Perfect to use inside or outside.



Custom Design

Our expert designers craft signage that is clean, inviting, and visually striking, while effectively reinforcing your brand identity.



In-house Printing

High-quality printing with vibrant colors, sharp details, and durable materials built to withstand the demands of busy grocery environments.



Installation

Our skilled team handles installation efficiently and accurately, ensuring minimal disruption to your store's operations.



615-537-1288 | dodatcreative.com

Email us at orders@dodatcreative.com for more information or to set up an in-person meeting.